

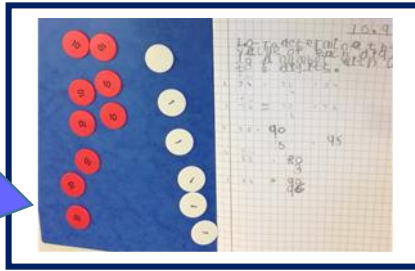
# Mathematics

At Walmley Junior School, we are extremely passionate about Mathematics! We teach our bespoke curriculum through engaging and exciting activities, enabling our children to make connections between different concepts in order to be confident mathematicians.

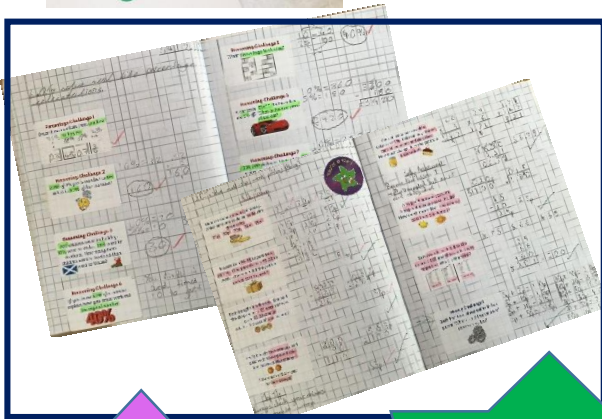
We build on prior learning, teaching new concepts in depth, aiming to embed learning in pupils' long term memories. Our times tables system is used to celebrate pupils' achievements when learning these important facts - we even have our very own app to help! Practical resources are used at all opportunities to support learning, as is our large outdoor space. Our children enjoy Mathematics and we are extremely proud of their achievements each year.



High quality resources to support all learners



33, 66, 99 and 100 Times Tables



I enjoy every aspect of Maths at WJS from column addition, to rounding, to factors. I look forward to Maths every day, since the teachers make it fun and enjoyable. My favourite lesson is when we do a mystery task because I love finding out who did the crime! *James Y6*

99 Gold

66 Silver

33 Bronze

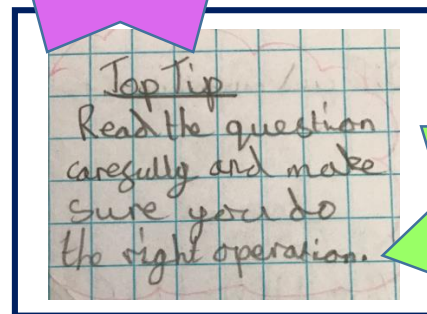
100 Platinum

66 Silver		100 Platinum	
2, 3, 4, 5, and 10 times	66	2, 3, 4, 5, and 10 times	100
66 ÷ 2 =	33	100 ÷ 2 =	50
66 ÷ 3 =	22	100 ÷ 3 =	33.33
66 ÷ 4 =	16.5	100 ÷ 4 =	25
66 ÷ 5 =	13.2	100 ÷ 5 =	20
66 ÷ 6 =	11	100 ÷ 6 =	16.67
66 ÷ 7 =	9.43	100 ÷ 7 =	14.29
66 ÷ 8 =	8.25	100 ÷ 8 =	12.5
66 ÷ 9 =	7.33	100 ÷ 9 =	11.11
66 ÷ 10 =	6.6	100 ÷ 10 =	10
66 ÷ 11 =	6	100 ÷ 11 =	9.09
66 ÷ 12 =	5.5	100 ÷ 12 =	8.33
66 ÷ 13 =	5.08	100 ÷ 13 =	7.69
66 ÷ 14 =	4.71	100 ÷ 14 =	7.14
66 ÷ 15 =	4.4	100 ÷ 15 =	6.67
66 ÷ 16 =	4.13	100 ÷ 16 =	6.25
66 ÷ 17 =	3.88	100 ÷ 17 =	5.88
66 ÷ 18 =	3.67	100 ÷ 18 =	5.56
66 ÷ 19 =	3.47	100 ÷ 19 =	5.26
66 ÷ 20 =	3.3	100 ÷ 20 =	5
66 ÷ 21 =	3.14	100 ÷ 21 =	4.76
66 ÷ 22 =	3	100 ÷ 22 =	4.55
66 ÷ 23 =	2.87	100 ÷ 23 =	4.35
66 ÷ 24 =	2.75	100 ÷ 24 =	4.17
66 ÷ 25 =	2.64	100 ÷ 25 =	4
66 ÷ 26 =	2.54	100 ÷ 26 =	3.85
66 ÷ 27 =	2.44	100 ÷ 27 =	3.7
66 ÷ 28 =	2.36	100 ÷ 28 =	3.57
66 ÷ 29 =	2.28	100 ÷ 29 =	3.45
66 ÷ 30 =	2.2	100 ÷ 30 =	3.33
66 ÷ 31 =	2.13	100 ÷ 31 =	3.23
66 ÷ 32 =	2.06	100 ÷ 32 =	3.13
66 ÷ 33 =	2	100 ÷ 33 =	3.03
66 ÷ 34 =	1.94	100 ÷ 34 =	2.94
66 ÷ 35 =	1.89	100 ÷ 35 =	2.86
66 ÷ 36 =	1.83	100 ÷ 36 =	2.78
66 ÷ 37 =	1.78	100 ÷ 37 =	2.71
66 ÷ 38 =	1.74	100 ÷ 38 =	2.63
66 ÷ 39 =	1.69	100 ÷ 39 =	2.56
66 ÷ 40 =	1.65	100 ÷ 40 =	2.5
66 ÷ 41 =	1.61	100 ÷ 41 =	2.44
66 ÷ 42 =	1.57	100 ÷ 42 =	2.38
66 ÷ 43 =	1.53	100 ÷ 43 =	2.33
66 ÷ 44 =	1.5	100 ÷ 44 =	2.27
66 ÷ 45 =	1.47	100 ÷ 45 =	2.22
66 ÷ 46 =	1.43	100 ÷ 46 =	2.17
66 ÷ 47 =	1.4	100 ÷ 47 =	2.13
66 ÷ 48 =	1.38	100 ÷ 48 =	2.08
66 ÷ 49 =	1.35	100 ÷ 49 =	2.04
66 ÷ 50 =	1.32	100 ÷ 50 =	2
66 ÷ 51 =	1.29	100 ÷ 51 =	1.96
66 ÷ 52 =	1.27	100 ÷ 52 =	1.92
66 ÷ 53 =	1.25	100 ÷ 53 =	1.89
66 ÷ 54 =	1.22	100 ÷ 54 =	1.85
66 ÷ 55 =	1.2	100 ÷ 55 =	1.82
66 ÷ 56 =	1.18	100 ÷ 56 =	1.79
66 ÷ 57 =	1.16	100 ÷ 57 =	1.75
66 ÷ 58 =	1.14	100 ÷ 58 =	1.72
66 ÷ 59 =	1.12	100 ÷ 59 =	1.69
66 ÷ 60 =	1.1	100 ÷ 60 =	1.67
66 ÷ 61 =	1.08	100 ÷ 61 =	1.64
66 ÷ 62 =	1.07	100 ÷ 62 =	1.61
66 ÷ 63 =	1.05	100 ÷ 63 =	1.59
66 ÷ 64 =	1.03	100 ÷ 64 =	1.56
66 ÷ 65 =	1.02	100 ÷ 65 =	1.54
66 ÷ 66 =	1	100 ÷ 66 =	1.52
66 ÷ 67 =	0.99	100 ÷ 67 =	1.49
66 ÷ 68 =	0.97	100 ÷ 68 =	1.47
66 ÷ 69 =	0.96	100 ÷ 69 =	1.45
66 ÷ 70 =	0.94	100 ÷ 70 =	1.43
66 ÷ 71 =	0.93	100 ÷ 71 =	1.41
66 ÷ 72 =	0.92	100 ÷ 72 =	1.39
66 ÷ 73 =	0.91	100 ÷ 73 =	1.37
66 ÷ 74 =	0.89	100 ÷ 74 =	1.35
66 ÷ 75 =	0.88	100 ÷ 75 =	1.33
66 ÷ 76 =	0.87	100 ÷ 76 =	1.32
66 ÷ 77 =	0.86	100 ÷ 77 =	1.3
66 ÷ 78 =	0.85	100 ÷ 78 =	1.28
66 ÷ 79 =	0.84	100 ÷ 79 =	1.27
66 ÷ 80 =	0.82	100 ÷ 80 =	1.25
66 ÷ 81 =	0.81	100 ÷ 81 =	1.23
66 ÷ 82 =	0.81	100 ÷ 82 =	1.22
66 ÷ 83 =	0.8	100 ÷ 83 =	1.2
66 ÷ 84 =	0.79	100 ÷ 84 =	1.19
66 ÷ 85 =	0.78	100 ÷ 85 =	1.18
66 ÷ 86 =	0.77	100 ÷ 86 =	1.16
66 ÷ 87 =	0.76	100 ÷ 87 =	1.15
66 ÷ 88 =	0.75	100 ÷ 88 =	1.14
66 ÷ 89 =	0.74	100 ÷ 89 =	1.13
66 ÷ 90 =	0.73	100 ÷ 90 =	1.11
66 ÷ 91 =	0.73	100 ÷ 91 =	1.1
66 ÷ 92 =	0.72	100 ÷ 92 =	1.09
66 ÷ 93 =	0.71	100 ÷ 93 =	1.08
66 ÷ 94 =	0.7	100 ÷ 94 =	1.06
66 ÷ 95 =	0.7	100 ÷ 95 =	1.05
66 ÷ 96 =	0.69	100 ÷ 96 =	1.04
66 ÷ 97 =	0.68	100 ÷ 97 =	1.03
66 ÷ 98 =	0.68	100 ÷ 98 =	1.02
66 ÷ 99 =	0.67	100 ÷ 99 =	1.01
66 ÷ 100 =	0.66	100 ÷ 100 =	1

Collaborative work with KS1



Top Tips to show our understanding!



Homework to support our curriculum



Outdoor learning!



Our bespoke Mathtermind times tables app



## Useful Website Links

[www.mathtermind.com](http://www.mathtermind.com)

[www.timestables.co.uk](http://www.timestables.co.uk)

[www.topmarks.co.uk/maths-games/7-11-years/timestables](http://www.topmarks.co.uk/maths-games/7-11-years/timestables)

<b>33</b>	<b>Bronze Challenge</b> 33 questions / 3 minutes 2,5,10 times tables
<b>66</b>	<b>Silver Challenge</b> 66 questions / 5 minutes 2,3,4,5,6,10 times tables
<b>99</b>	<b>Gold Challenge</b> 99 questions / 8 minutes 2 to 12 times tables
<b>99</b>	<b>Gold+ Challenge</b> 99 questions / 3 minutes 2 to 12 times tables
<b>100</b>	<b>Platinum Challenge</b> 100 questions / 8 minutes All skills